




# Climatic Bulletin

January 2025

 **Max  
temperature**

 **Min  
temperature**

 **Mean  
temperature**

 **Precipitation**

 **Sunshine  
duration**

January was a warm month relatively to normal temperatures. Meanwhile the significant amounts of snowfalls, covered the upper parts of mountains of mainland and Creta island, was the main characteristic.



# Temperature

### First 10-day period

More specific (varied) :

**Minimum:**

from -6°C to 10°C over north mainland,  
 from -3°C to 12°C over central mainland,  
 from 3°C to 12°C over rest parts.

**Maximum:**

from 8°C to 16°C over north mainland,  
 from 11°C to 21°C over central mainland,  
 from 15°C to 20°C over rest parts.

### Second 10-day period

More specific (varied) :

**Minimum:**

from -7°C to 9°C over north mainland,  
 from -2°C to 12°C over central mainland,  
 from 4°C to 14°C over rest parts.

**Maximum:**

from -1,5°C to 15°C over north mainland,  
 from -2°C to 21°C over central mainland,  
 from 6°C to 20°C over rest parts.

### Third 10-day period

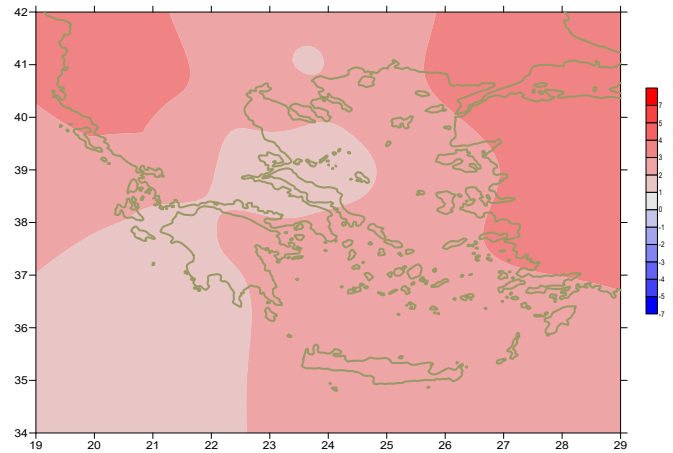
More specific (varied) :

**Minimum:**

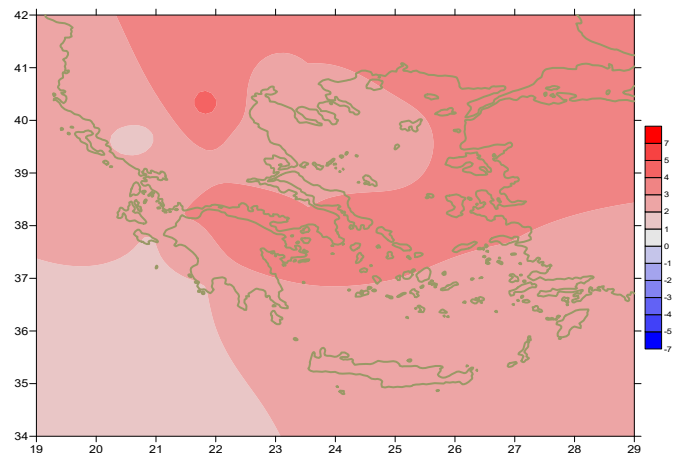
from -5°C to 11°C over north mainland,  
 from 0°C to 12°C over central mainland,  
 from 5°C to 12°C over rest parts.

**Maximum:**

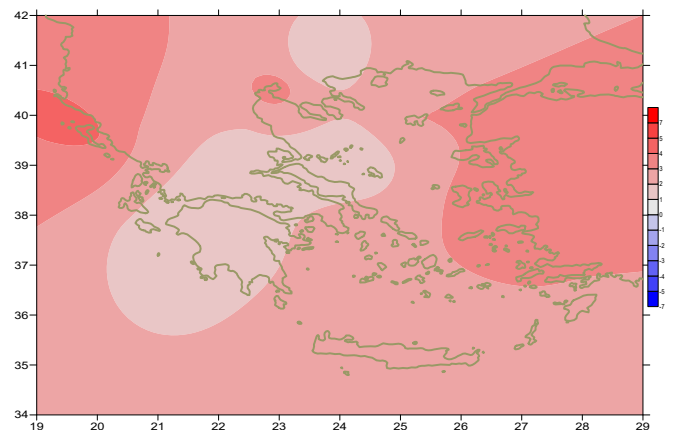
from 0°C to 19°C over north mainland,  
 from 5°C to 22°C over central mainland,  
 from 12°C to 21°C over rest parts.



*Deviation of mean temperature from normal values*



*Deviation of maximum temperature from normal values*



*Deviation of minimum temperature from normal values*



## P r e c i p i t a t i o n

### First 10-day period

Locally significant amounts of precipitation.

More specific:

25mm in Alexandroupoli (1/1), 32mm in Karpathos (4/1), 14mm in Rodos (5/1), 86mm in Kerkira, 31mm in Zakynthos (8/1), 26mm in Zakynthos (9/1).

### Second 10-day period

Large amounts of precipitation.

More specific:

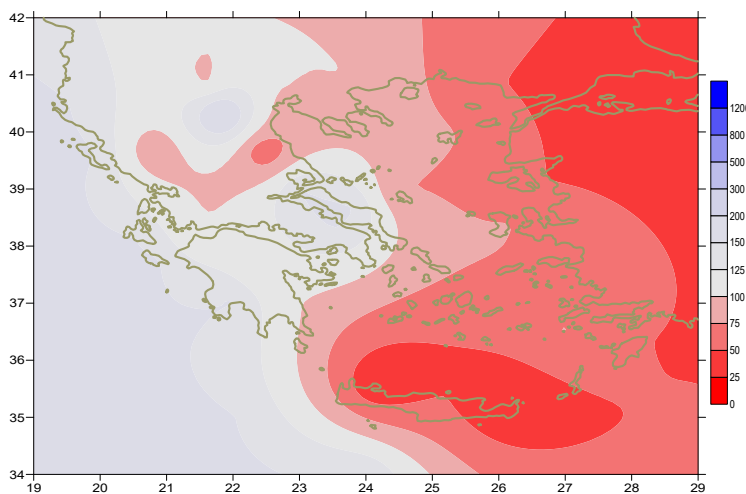
18mm in Doxato, 23mm in Serres, 44mm in Konitsa, 35mm in Othonoi (12/1), 37mm in Argostoli, 24mm in Kerkira, 37mm in Othonoi, 44mm in Kalamata, 28mm in Lamia, 75mm in Oreoi, 49mm in Tanagra, 60mm in Tripoli, 38mm in Astros, 24mm in Chios, 25mm in Limnos, 24mm in Spata, 29mm in Tatoi, 31mm in Elefsina, 55mm in Kotroni (13/1), 26mm in Argostoli, 48mm in Adravida, 77mm in Zakynthos, 47mm in Kalamata, 50mm in Oreoi, 22mm in Tinos, 39mm in Mikonos, 20mm in Souda, 33mm in Tatoi (14/1), 30mm in Zakynthos, 15mm in Araxos, 21mm in Heraklion, 15mm in Limnos, 18mm in Ikaria (15/1), 19mm in Astros (16/1).

### Third 10-day period

Locally significant amounts of precipitation.

More specific:

16mm in Argostoli, 19mm in Othonoi, 15mm in Karpathos (21/1), 20mm in Leros (25/1), 32mm in Kerkira, 24mm in Ioannina, 17mm in Preveza, 24mm in Kalamata, 18mm in Astros, 33mm in Chios, 19mm in Kos (30/1).



**Deviation of monthly precipitation height from normal values (%)**

TABLE OF MEAN VALUES

STATION	Longitude	Latitude	Tmean	TX	TN	RR	INST
SERRES	23,53	41,07	5,8	10,9	1,3	35	100
FLORINA	21,40	40,78					
KASTORIA	21,27	40,45	5,3	11,8	-0,9	26	114
TRIKALA_IMATHIAS	22,55	40,60					
THESSALONIKI	22,97	40,52	8,1	11,5	5	22	109
CHRYSOUPOLI	24,62	40,92	8	12,6	3,5	12	137
ALEXANDROUPOLI	25,95	40,85	8,2	12,2	4,2	18	132
KOZANI	21,83	40,28	5,1	10,3	1,2	71	
KERKYRA	19,92	39,62	12,8	16,2	9,5	190	87
IOANNINA	20,82	39,70	7,8	12,3	3,2	56	68
PREVEZA	20,76	38,91	11,9	15,4	9	83	
TRIKALA_THESSALIAS	21,77	39,52					
LARISA	22,45	39,65	7,1	12,3	2,6	10	92
LIMNOS	25,23	39,92	10,3	13,7	7,3	56	142
ARTA	21,00	39,17					
AGHIALOS	22,78	39,21					
MYTILINI	26,60	39,05	12,4	15,4	9,9	58	125
VELO	22,77	37,97					
AGRINIO	21,35	38,60					
LAMIA	22,43	38,87					
ANDRAVIDA	21,28	37,92	11,7	16,7	7,8	124	135
SKYROS	24,48	38,96	11,8	15,2	8,9	54	148
ARGOSTOLI	20,50	38,12	13,9	17,2	11,1	142	149
ARAXOS	21,42	38,15	12,2	16,9	7,9	98	131
TANAGRA	23,57	38,33	9,3	14,9	4,7	93	143
HIOS	26,13	38,35	12,6	16,1	9,5	79	131
PYRGOS	21,42	37,67					
TRIPOLI	22,40	37,52	7,6	13,1	2,2	108	127
TATOI	23,78	38,10	10	15	5,9	75	
HELLINIKO	23,73	37,90	12,9	17,1	10	*	207
ELEYSINA	23,55	38,07	11,9	16,3	8	46	
ZAKYNTHOS	20,88	37,75	12,9	16,5	9,5	208	141
SAMOS	26,92	37,68	13,6	16,5	10,4	*	
ARGOS	22,75	37,63					
KALAMATA	22,02	37,07	11,9	17,5	7,3	166	138
NAXOS	25,37	37,10					
METHONI	21,70	36,82					
MHLOS	24,43	36,73					
SPATA	23,95	37,95	11,8	15,6	7,1	32	
KOS	27,08	36,80					
KYTHIRA	22,98	36,15					
SANTORINI	25,41	36,41					
SOUDA	24,12	35,55	13,5	16,9	10,6	34	158
RODOS	28,08	36,40	14,8	17,6	11,7	53	177
MYKONOS	25,35	37,43	13,5	15,7	12,2	58	
HRAKLEIO	25,18	35,33	14,4	18,1	11,5	32	184
IERAPETRA	25,73	35,02					
SITEIA	26,10	35,21	14,7	17,6	12,9	12	170
RETHYMNO	24,50	35,36					
TYMPAKI	24,76	35,06					
KASTELI	25,33	35,18	12,1	16	8,7	9	174
KARPATOS	27,15	35,42	15,7	18,2	13,4	59	
PAROS	25,13	37,02	14	17	11,8	22	167
SYROS	24,95	37,42	14,1	16,4	12,3	46	168
IKARIA	26,35	37,68					

11,314,58,13617810,214,16,45611,314,57,89612510,713,7820210,5165,88616112,715,410,232137

**TABLE OF DEVIATIONS  
FROM NORMAL VALUES**

<b>STATION</b>	<b>TMEAN ( deviation ) (I)</b>	<b>PRECI (deviation % ) (II)</b>
SERRES	1,8	99
FLORINA		
THESSALONIKI	2,9	60
ALEXANDROUPOLI	3,2	30
KOZANI	2,9	180
KERKYRA	3	144
IOANNINA	3	43
LARISA	1,8	34
LIMNOS	2,6	78
AGHIALOS		
MYTILINI	2,9	45
AGRINIO		
SKYROS	1,7	69
ARGOSTOLI	2,1	122
ARAXOS	1,9	102
HIOS	2,8	68
HELLINIKO	2,5	*
ZAKYNTHOS	1,4	138
SAMOS	3,1	*
KALAMATA	1,5	147
NAXOS		
METHONI		
SANTORINI		
SOUDA	2,5	24
RODOS	2,9	36
HERAKLIO	2,2	35
SITIA		

(I) deviation of mean temperature from normal values  
(II) deviation of monthly precipitation height from normal values %.

\* the precise amount of preci (of the previous page) has not recorded and the relative percentage is not estimated .

# Climatic Bulletin

## General Description

Precipitation amounts were higher than normal values only over the west parts of mainland and the area of Ionian sea.  
The mean temperature varied higher enough than normal values everywhere.

### Climatic Parameters :

- ❖ **Normal Values** : normal values for various parameters (temperature, precipitation, etc) are defined as mean values calculated for 30 years. These normal values are used as basis and represent the mean situation. They can be specified in 10 daily, monthly, seasonally and yearly level and are used for the trend comparison of 10 days, month, season or year as: rainy decameron, mild winter, cool August etc.

### Measurement :

- ❖ **Precipitation**  
1 mm = 1 litre/m<sup>2</sup>

### Table Legend :

Tmean : Mean Temperature  
TN : Minimum Temperature  
TX : Maximum Temperature  
RR : Precipitation height(mm)  
INST : Sun Duration (hours)

### UTC hours (Universal Time Coordinates) in Greece :

- ❖ Winter : UTC hour = local hour - 2
- ❖ Summer : UTC hour = local hour - 3

© Hellenic National Meteorological Service  
Reproduction is prohibited without written authorization  
14 El.Venizelou 16777  
Helliniko, Athens  
Greece