




Climatic Bulletin

February 2025

 **Max
temperature**

 **Min
temperature**

 **Mean
temperature**

 **Precipitation**

 **Sunshine
duration**

February was a cold month relatively to normal temperatures, mainly over the north and east parts. Meanwhile the precipitation was relatively high over the area of Ionian sea, over the western Crete and the islands of Evia and Chios.



Temperature

First 10-day period

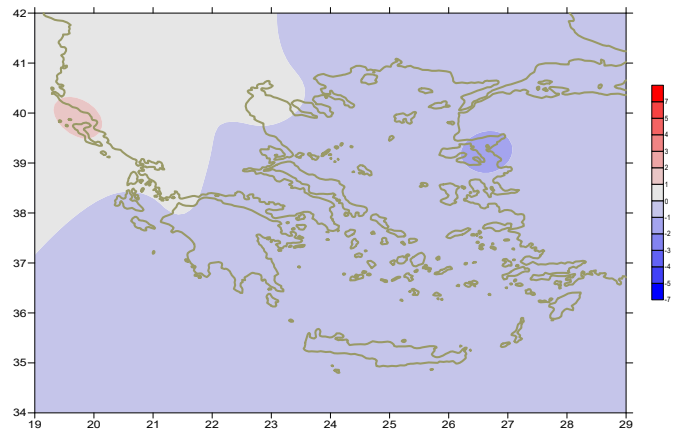
More specific (varied) :

Minimum:

from -7°C to 7°C over north mainland,
 from -4°C to 11°C over central mainland,
 from 4°C to 13°C over rest parts.

Maximum:

from 3°C to 18°C over north mainland,
 from 5°C to 20°C over central mainland,
 from 7°C to 20°C over rest parts.



Deviation of mean temperature from normal values

Second 10-day period

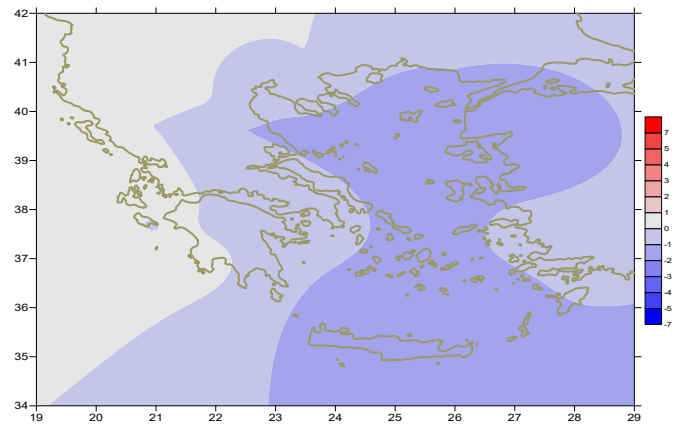
More specific (varied) :

Minimum:

from -10°C to 9°C over north mainland,
 from -6°C to 10°C over central mainland,
 from 2°C to 12°C over rest parts.

Maximum:

from 3°C to 17°C over north mainland,
 from 5°C to 19°C over central mainland,
 from 5°C to 17°C over rest parts.



Deviation of maximum temperature from normal values

Third 10-day period

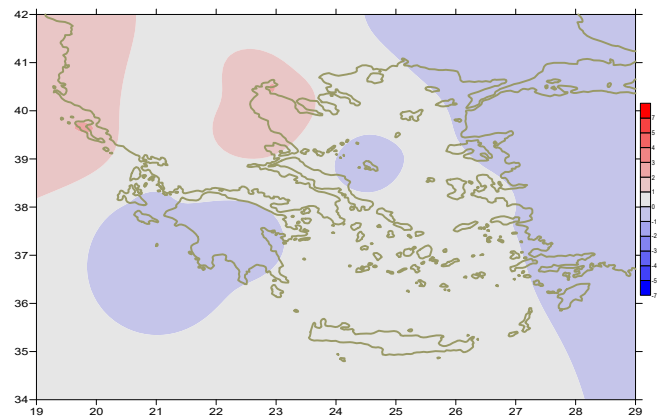
More specific (varied) :

Minimum:

from -10°C to 9°C over north mainland,
 from -4°C to 11°C over central mainland,
 from 2°C to 12°C over rest parts.

Maximum:

from 3°C to 18°C over north mainland,
 from 4°C to 17°C over central mainland,
 from 5°C to 18°C over rest parts.



Deviation of minimum temperature from normal values



Precipitation

First 10-day period

Locally significant amounts of precipitation.

More specific:

16mm in Othonoi, 18mm in Argostoli, 18mm in Kerkira, 12mm in Tripoli (3/2),
12mm in Larisa, 17mm in Oreoi, 10mm in Aghialos, 56mm in Kimi,
15mm in Skiros, 12mm in Tanagra, 13mm in Milos, 14mm in Tinos, 13mm in Kithnos,
22mm in Syros, 25mm in Spata, 13mm in Tatoi, 24mm in Hellinikon, 20mm in Rafina (4/2).

Δεύτερο δεκαήμερο Second 10-day period

Large amounts of precipitation.

More specific:

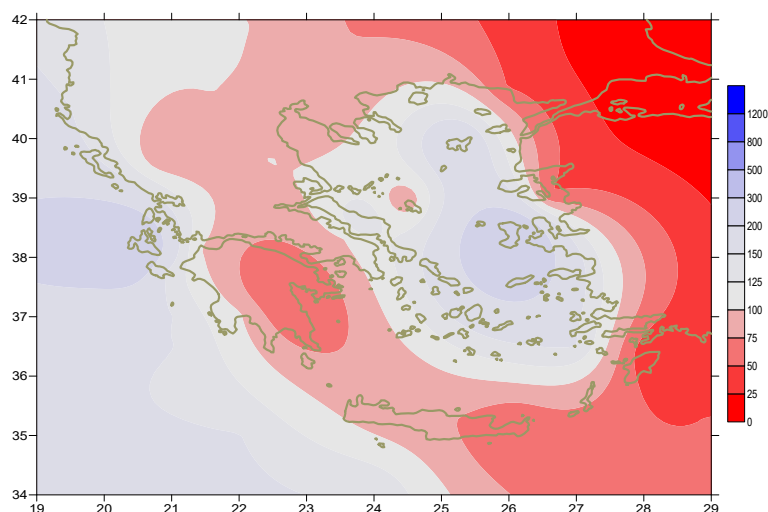
20mm in Soufli, 27mm in Preveza, 69mm in Argostoli, 10mm in Antirio (13/2),
103mm in Argostoli, 31mm in Preveza, 36mm in Kerkira, 60mm in Zakynthos,
21mm in Kalamata, 21mm in Adravida, 18mm in Araxos, 16mm in Messologi,
14mm in Gavdos (14/2),
13mm in Kerkira, 28mm in Zakynthos, 27mm in Adravida (15/2),
30mm in Argostoli, 30mm in Zakynthos, 28mm in Kalamata, 14mm in Tripoli,
10mm in Milos, 11mm in Icaria (16/2),
11mm in Alexandroupoli, 10mm in Ormenio, 31mm in Kasteli, 12mm in Limnos,
19mm in Milos, 12mm in Karpathos, 25mm in Leros (17/2),
16mm in Kimi, 10mm in Aghialos (18/2),
26mm in Heraklion, 16mm in Skiathos, 31mm in Kimi (19/2).

Third 10-day period

Locally significant amounts of precipitation.

More specific:

15mm in Argostoli, 19mm in Kerkira, 11mm in Kithnos, 15mm in Chios (25/2),
13mm in Milos (26/2),
13mm in Ioannina, 52mm in Kerkira, 36mm in Zakynthos, 26mm in Adravida,
43mm in Argostoli, 18mm in Araxos, 19mm in Kalamata, 18mm in Othonoi,
101mm in Chios, 48mm in Limnos, 40mm in Icaria, 88mm in Leros,
18mm in Kos(27/2),
12mm in Kranea, 13mm in Kimi, 12mm in Antikithira, 100mm in Chios,
17mm in Elefsina, 15mm in Leros (28/2).



Deviation of monthly precipitation height
from normal values (%)

TABLE OF MEAN VALUES

STATION	Longitude	Latitude	Tmean	TX	TN	RR	INST
SERRES	23,53	41,07	6	10,6	1,8	28	104
FLORINA	21,40	40,78					
KASTORIA	21,27	40,45	4,5	9,2	0,4	15	101
TRIKALA_IMATHIAS	22,55	40,60					
THESSALONIKI	22,97	40,52	7,4	10,2	4,4	23	96
CHRYSOUPOLI	24,62	40,92	5,3	9,5	1,1	9	128
ALEXANDROUPOLI	25,95	40,85	5,2	8,6	1,5	15	134
KOZANI	21,83	40,28	3,6	7,9	0	22	
KERKYRA	19,92	39,62	11,4	14,7	7,8	145	115
IOANNINA	20,82	39,70	6,8	11,8	1,2	53	124
PREVEZA	20,76	38,91	10,8	14,4	7,8	65	
TRIKALA_THESSALIAS	21,77	39,52					
LARISA	22,45	39,65	6,7	10,8	3,4	33	75
LIMNOS	25,23	39,92	7,4	9,2	5,2	81	126
ARTA	21,00	39,17					
AGHIALOS	22,78	39,21					
MYTILINI	26,60	39,05	8,6	11,1	6,6	47	154
VELO	22,77	37,97					
AGRINIO	21,35	38,60					
LAMIA	22,43	38,87					
ANDRAVIDA	21,28	37,92	9,5	14,7	4,4	93	170
SKYROS	24,48	38,96	9,2	11,3	7	38	95
ARGOSTOLI	20,50	38,12	11,4	15,1	8,9	316	171
ARAXOS	21,42	38,15	10,7	14,5	6,6	71	152
TANAGRA	23,57	38,33					
HIOS	26,13	38,35	9,2	11,4	7,4	246	135
PYRGOS	21,42	37,67					
TRIPOLI	22,40	37,52	4,9	9,5	0,7	44	84
TATOI	23,78	38,10	7,4	10,9	4,1	35	
HELLINIKO	23,73	37,90	10	13,4	7,8		147
ELEYSINA	23,55	38,07	9,3	12,5	6,5	42	
ZAKYNTHOS	20,88	37,75	11	14,4	7,2	162	166
SAMOS	26,92	37,68	9,7	12,4	6,4		
ARGOS	22,75	37,63					
KALAMATA	22,02	37,07	10,4	16	5,8	88	156
NAXOS	25,37	37,10					
METHONI	21,70	36,82					
MHLOS	24,43	36,73					
SPATA	23,95	37,95	8,9	11,7	5,6	37	
KOS	27,08	36,80	10,2	12,8	8,2	43	
KYTHIRA	22,98	36,15					
SANTORINI	25,41	36,41					
SOUDA	24,12	35,55	10,5	13,2	8,1	40	112
RODOS	28,08	36,40	12	14,3	8,4	14	200
MYKONOS	25,35	37,43	9,9	11,6	8,6	26	
HRAKLEIO	25,18	35,33	11,7	14,2	9,3	44	131
IERAPETRA	25,73	35,02					
SITEIA	26,10	35,21	11,5	13,9	9,8	20	121
RETHYMNO	24,50	35,36					
TYMPAKI	24,76	35,06					
KASTELI	25,33	35,18	8,5	11,6	5,6	95	125
KARPATIOS	27,15	35,42	12,2	14,3	10,2	10	
PAROS	25,13	37,02	10,3	12,3	8,2	22	148
SYROS	24,95	37,42	10,6	12,6	8,9	40	126
IKARIA	26,35	37,68					

11,314,58,13617810,214,16,45611,314,57,89612510,713,7820210,5165,88616112,715,410,232137

**TABLE OF DEVIATIONS
FROM NORMAL VALUES**

STATION	TMEAN (deviation) (I)	PRECI (deviation %) (II)
SERRES	-0.3	66
FLORINA		
THESSALONIKI	0.7	57
ALEXANDROUPOLI	-0.6	25
KOZANI	0	70
KERKYRA	1.1	107
IOANNINA	0.7	46
LARISA	-0.1	95
LIMNOS	-0.5	184
AGHIALOS		
MYTILINI	-1.2	48
AGRINIO		
SKYROS	-1	60
ARGOSTOLI	-0.3	279
ARAXOS	0.2	83
HIOS	-0.6	295
HELLINIKO	-0.5	*
ZAKYNTHOS	-0.5	144
SAMOS	-0.3	
KALAMATA	-0.3	86
NAXOS		
METHONI		
SANTORINI		
SOUDA	-0.6	36
RODOS	0	12
HERAKLIO	-0.5	57
SITIA	-0.9	27

(I) deviation of mean temperature from normal values
(II) deviation of monthly precipitation height from normal values %.

* the precise amount of preci (of the previous page) has not recorded and the relative percentage is not estimated .

Climatic Bulletin

General Description

Precipitation amounts were higher than normal values only over the area of Ionian sea, over the western parts of Crete and over Evia and Chios.
The mean temperature varied lower than normal values everywhere.

Climatic Parameters :

- ❖ **Normal Values** : normal values for various parameters (temperature, precipitation, etc) are defined as mean values calculated for 30 years. These normal values are used as basis and represent the mean situation. They can be specified in 10 daily, monthly, seasonally and yearly level and are used for the trend comparison of 10 days, month, season or year as: rainy decameron, mild winter, cool August etc.

Measurement :

- ❖ **Precipitation**
1 mm = 1 litre/m²

Table Legend :

Tmean : Mean Temperature
TN : Minimum Temperature
TX : Maximum Temperature
RR : Precipitation height(mm)
INST : Sun Duration (hours)

UTC hours (Universal Time Coordinates) in Greece :

- ❖ Winter : UTC hour = local hour - 2
- ❖ Summer : UTC hour = local hour - 3

© Hellenic National Meteorological Service
Reproduction is prohibited without written authorization
14 El.Venizelou 16777
Helliniko, Athens
Greece