




# Climatic Bulletin

March 2025

 **Max  
temperature**

 **Min  
temperature**

 **Mean  
temperature**

 **Precipitation**

 **Sunshine  
duration**

March characterized by the significant variation of the temperature values and the alternation of weather conditions. Finally the mean temperature values exceeded the normal ones everywhere.



# Temperature

### First 10-day period

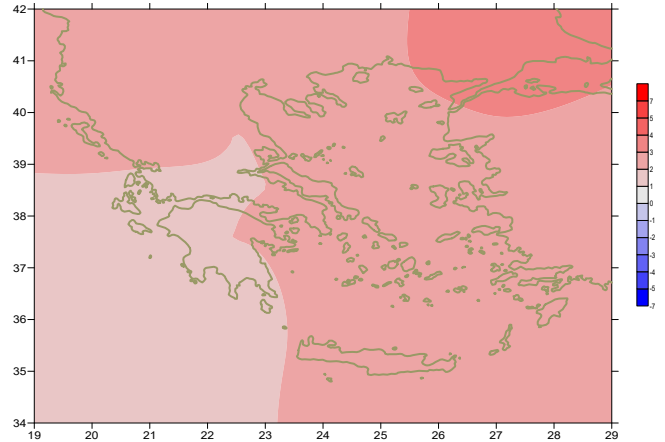
More specific (varied) :

**Minimum:**

from -6°C to 5°C over north mainland,  
 from -2°C to 8°C over central mainland,  
 from 5°C to 13°C over rest parts.

**Maximum:**

from 6°C to 22°C over north mainland,  
 from 8°C to 22°C over central mainland,  
 from 13°C to 18°C over rest parts.



*Deviation of mean temperature from normal values*

### Second 10-day period

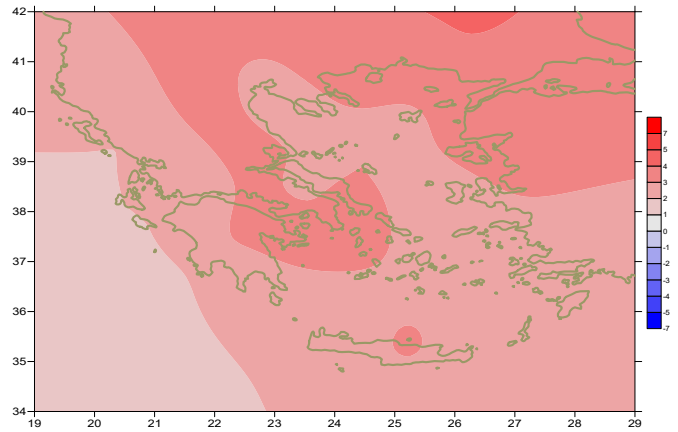
More specific (varied) :

**Minimum:**

from -9°C to 14°C over north mainland,  
 from -4°C to 17°C over central mainland,  
 from 2°C to 20°C over rest parts.

**Maximum:**

from 5°C to 29°C over north mainland,  
 from 7°C to 30°C over central mainland,  
 from 9°C to 32°C over rest parts.



*Deviation of maximum temperature from normal values*

### Third 10-day period

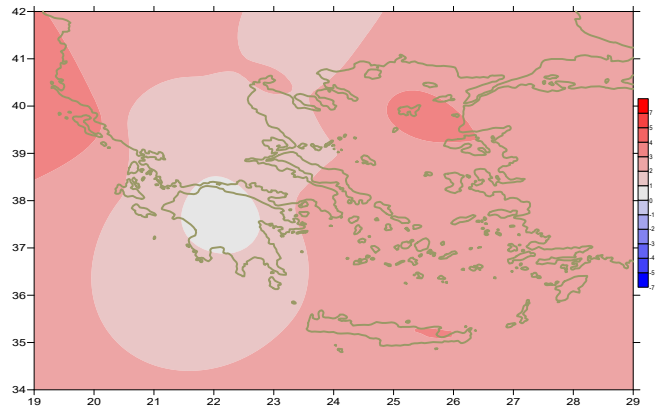
More specific (varied) :

**Minimum:**

from -6°C to 17°C over north mainland,  
 from -4°C to 15°C over central mainland,  
 from 4°C to 16°C over rest parts.

**Maximum:**

from 10°C to 22°C over north mainland,  
 from 12°C to 24°C over central mainland,  
 from 18°C to 26°C over rest parts.



*Deviation of minimum temperature from normal values*



## Precipitation

### First 10-day period

Locally small amounts of precipitation.

More specific:

7mm in Othonoi (2/3),  
8mm in Doxato, 6mm in Thessaloniki, 6mm in Serres, 8mm in Skiathos,  
12mm in Kimi, 30mm in Astros, 12mm in Kasteli, 6mm in Tatoi (3/3).

### Δεύτερο δεκάημερο Second 10-day period

Locally small amounts of precipitation.

More specific:

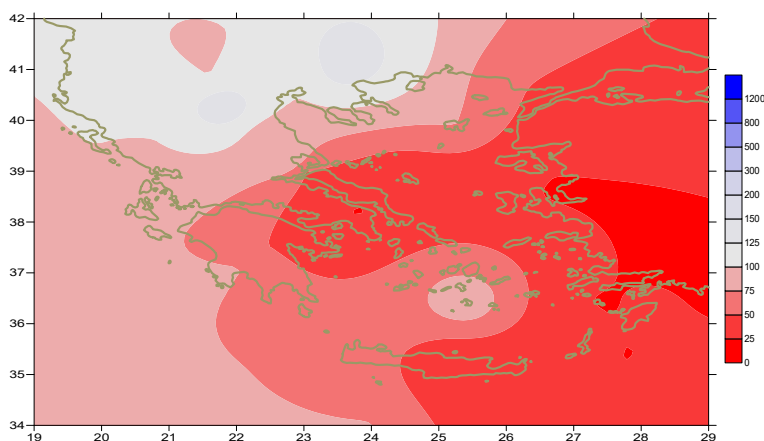
17mm in Ormenio (17/3),  
7mm in Kavala, 10mm in Antirio, 11mm in Kimi,  
6mm in Astos, 6mm in Nat. Kolimviterio (18/3),  
10mm in Oreoi, 7mm in Aghialos, 6mm in Milos, 5mm in Mikonos,  
6mm in Souda, 14mm in Kasteli, 6mm in Hellinikon (19/3).

### Third 10-day period

Locally significant amounts of precipitation.

More specific:

18mm in Ioannina, 29mm in Kerkira, 15mm in Othonoi(25/3),  
13mm in Ioannina, 13mm in Argostoli, 13mm in Zakynthos, 11mm in Andravida,  
15mm in Messologi, 15mm in Kranea (27/3),  
15mm in Polikastro, 31mm in Kimi, 17mm in Limnos (28/3),  
11mm in Thessaloniki, 20mm in Polikastro, 20mm in Preveza,  
20mm in Argstoli, 32mm in Kerkira, 16mm in Zakynthos, 20mm in Araxos,  
50mm in Othonoi, 37mm in Kalamata, 14mm in Gavdos (29/3),  
34mm in Kavala, 19mm in Doxato, 19mm in Polikastro, 17mm in Icaria,  
21mm in Leros, 20mm in Kos (30/3),  
34mm in Kavala, 20mm in Aghialos, 25mm in Oreoi, 27mm in Milos,  
24mm in Tinos, 47mm in Paros, 100mm in Mikonos (31/3).



*Deviation of monthly precipitation height  
from normal values (%)*

TABLE OF MEAN VALUES

STATION	Longitude	Latitude	Tmean	TX	TN	RR	INST
SERRES	23,53	41,07	12,5	19,1	5,6	47	174
FLORINA	21,40	40,78					
KASTORIA	21,27	40,45	10,4	17,2	2,9	35	168
TRIKALA_IMATHIAS	22,55	40,60					
THESSALONIKI	22,97	40,52	12,2	16,6	7	46	176
CHRYSOUPOLI	24,62	40,92	11,7	16,8	6,5	94	187
ALEXANDROUPOLI	25,95	40,85	12,2	17,1	6	16	209
KOZANI	21,83	40,28	9,9	16,1	3,8	48	
KERKYRA	19,92	39,62	14,7	18,3	10,8	86	167
IOANNINA	20,82	39,70	11,6	17,1	4,7	84	166
PREVEZA	20,76	38,91	14,6	18,5	10,2	44	
TRIKALA_THESSALIAS	21,77	39,52					
LARISA	22,45	39,65	11,8	18,6	4,6	20	189
LIMNOS	25,23	39,92	13	15,7	10,2	27	203
ARTA	21,00	39,17					
AGHIALOS	22,78	39,21	12,4	17,7	6,3	45	197
MYTILINI	26,60	39,05	15,1	18,9	11,5	9	214
VELO	22,77	37,97					
AGRINIO	21,35	38,60					
LAMIA	22,43	38,87					
ANDRAVIDA	21,28	37,92	13,9	19,3	7,9	32	200
SKYROS	24,48	38,96	14,6	17,7	11,2	9	197
ARGOSTOLI	20,50	38,12	15	18,5	11,7	47	189
ARAXOS	21,42	38,15	14,2	19	8,7	32	194
TANAGRA	23,57	38,33	12,7	18,2	6,6	12	194
HIOS	26,13	38,35	14,5	17,8	10,5	7	201
PYRGOS	21,42	37,67					
TRIPOLI	22,40	37,52	10,5	16,7	3	26	192
TATOI	23,78	38,10	13,3	18,1	7	16	
HELLINIKO	23,73	37,90	15,2	20	11,6	11	
ELEYSINA	23,55	38,07	14,8	18,7	10,4	15	
ZAKYNTHOS	20,88	37,75	14,5	18,1	10,6	57	201
SAMOS	26,92	37,68	15,1	18,8	10,5		
ARGOS	22,75	37,63					
KALAMATA	22,02	37,07	13,8	19,5	7,7	47	196
NAXOS	25,37	37,10					
METHONI	21,70	36,82					
MHLOS	24,43	36,73					
SPATA	23,95	37,95	14,2	18,4	8,5	7	
KOS	27,08	36,80	15,2	18	12,4	20	
KYTHIRA	22,98	36,15					
SANTORINI	25,41	36,41					
SOUDA	24,12	35,55	15,1	19,1	11,2	26	199
RODOS	28,08	36,40	16,2	19,2	12,6	18	236
MYKONOS	25,35	37,43	14,4	16,6	13,2	106	
HRAKLEIO	25,18	35,33	16,7	20,5	13	11	206
IERAPETRA	25,73	35,02					
SITEIA	26,10	35,21	16,2	19,6	13,5	3	196
RETHYMNO	24,50	35,36					
TYMPAKI	24,76	35,06					
KASTELI	25,33	35,18	13,7	18,1	9,5	113	197
KARPATOS	27,15	35,42					
PAROS	25,13	37,02	15,1	18	12,7	47	218
SYROS	24,95	37,42	15	17,9	12,8	15	215
IKARIA	26,35	37,68					

11,314,58,13617810,214,16,45611,314,57,89612510,713,7820210,5165,88616112,715,410,232137

**TABLE OF DEVIATIONS  
FROM NORMAL VALUES**

STATION	TMEAN ( deviation ) (I)	PRECI (deviation % ) (II)
SERRES	2,3	142
FLORINA		
THESSALONIKI	2,1	101
ALEXANDROUPOLI	3,2	31
KOZANI	2,4	114
KERKYRA	2,2	87
IOANNINA	2,2	86
LARISA	2	55
LIMNOS	2,6	52
AGHIALOS	2	86
MYTILINI	2,8	12
AGRINIO		
SKYROS	2,5	18
ARGOSTOLI	1,8	57
ARAXOS	1,8	54
HIOS	2,2	10
HELLINIKO	2,2	25
ZAKYNTHOS	1,6	64
SAMOS	2,6	*
KALAMATA	1,4	65
NAXOS		
METHONI		
SANTORINI		
SOUDA	2,2	32
RODOS	2,2	24
HERAKLIO	2,7	19
SITIA	2,4	5

(I) deviation of mean temperature from normal values  
(II) deviation of monthly precipitation height from normal values %.

\* the precise amount of preci (of the previous page) has not recorded and the relative percentage is not estimated .

# Climatic Bulletin

## General Description

Precipitation amounts were lower than normal values over the most parts .  
The mean temperature varied higher enough than normal values everywhere.

### Climatic Parameters :

- ❖ **Normal Values** : normal values for various parameters (temperature, precipitation, etc) are defined as mean values calculated for 30 years. These normal values are used as basis and represent the mean situation. They can be specified in 10 daily, monthly, seasonally and yearly level and are used for the trend comparison of 10 days, month, season or year as: rainy decameron, mild winter, cool August etc.

### Measurement :

- ❖ **Precipitation**  
1 mm = 1 litre/m<sup>2</sup>

### Table Legend :

Tmean : Mean Temperature  
TN : Minimum Temperature  
TX : Maximum Temperature  
RR : Precipitation height(mm)  
INST : Sun Duration (hours)

### UTC hours (Universal Time Coordinates) in Greece :

- ❖ Winter : UTC hour = local hour - 2
- ❖ Summer : UTC hour = local hour - 3

© Hellenic National Meteorological Service  
Reproduction is prohibited without written authorization  
14 El.Venizelou 16777  
Helliniko, Athens  
Greece